



ARCHIVE ATTENDER®

FOR EXCHANGE



Archive Attender is an administrator driven solution designed to selectively move or copy messages from Exchange mailboxes, PST files and public folders to any storage device visible to the application via the network. Management is executed through an application interface that can be used to setup the schedule, search the indexed archives and view reports. Archive Attender assists companies with storage and compliance requirements while offering a flexible archiving architecture that does not require a SQL database or proprietary hardware.

Technical Features

Free Trials available at www.sherpasoftware.com

Administrative Features

- Manage storage limitations on the Exchange server
- Archive messages from the journaling mailbox
- Archive from mailboxes, PST files and public folders
- Archive contacts, calendars, notes, tasks and journal items
- Customize archiving policies to specific mailboxes, entire Exchange servers or AD groups
- Replace original messages with a plain text or HTML-based stub
- All archived content may be optionally indexed
- Multi-thread processing architecture for optimum performance
- Archive messages based on quotas, subject, sender, date, age, location and size
- In conjunction with Mail Attender, archive based on keywords, attachment type, content, etc.
- Drive processing with Microsoft Powershell scripts
- Define process-scheduling windows based on flexible start and end times
- Enforce retention policies to delete/move archived messages to secondary storage
- Maintain an audit trail of all activity
- Search and copy messages from the archive into a mailbox or into a PST file
- Control user's level of access to the archive

User Features

- Archive own messages and attachments
- Use stubs to access archived messages
- Search archives based on sender, received date, archived date, keywords and attachments within the Outlook interface
- Access archived messages remotely through Outlook Web Access (OWA)
- Sort messages to provide a more efficient interface

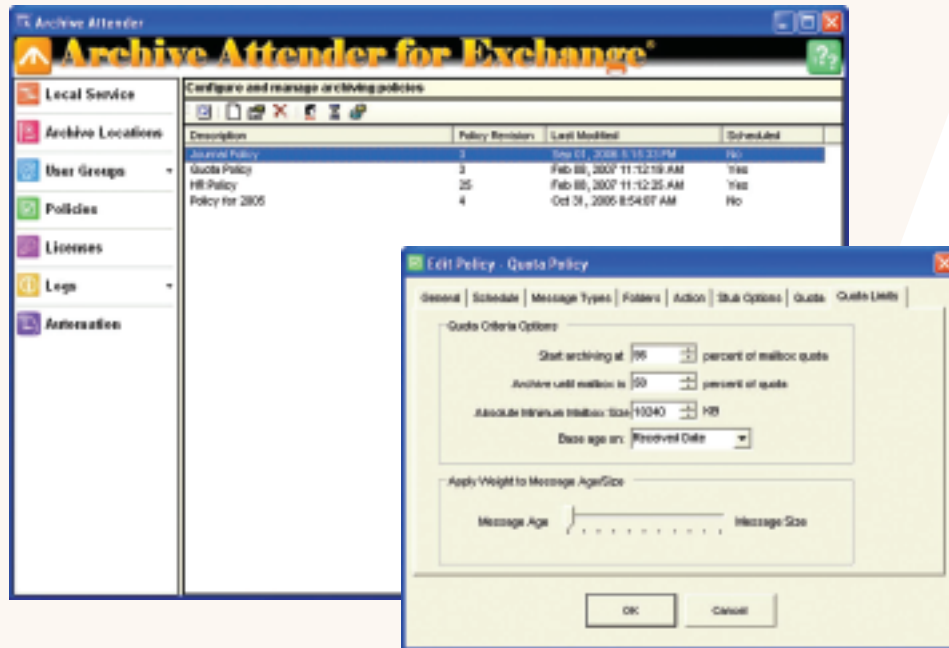
Specifications

System Requirements

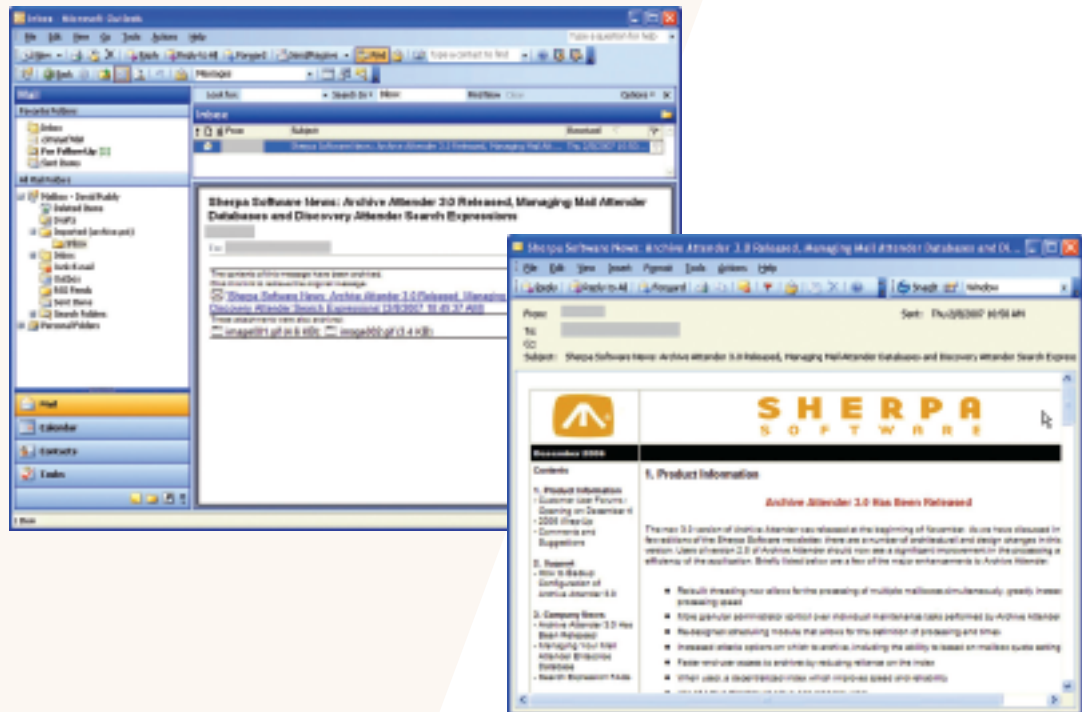
- Windows 2000 or higher
- Microsoft Internet Information Server 5.0 or higher
- Approximately 35MB for the Archive Attender console application
- .Net framework version 1.1 and 2.0 (installed, if not present)

Architecture

- Application console to setup the archiving policies, view reports and search archives
- Does not require installation of any component on the Exchange server
- Can archive from Exchange 5.5, 2000, 2003 and 2007
- Compatible with Outlook 98 and higher



Archive Attender Policy to archive messages based on Exchange Quota settings.



View of a message archived out of a PST file and accessed through a stub left in the user's mailbox.