



# MAIL ATTENDER<sup>®</sup>

FOR EXCHANGE



**Mail Attender for Exchange is a highly scalable content management tool that automates the scheduling of common policies in multiple information stores. Administrators can effectively and efficiently manage information in mailboxes, PST files on desktops/servers and public folders to address issues relating to policy enforcement, compliance and storage management. Mail Attender also offers inherent statistical reporting capabilities that provide access to unlimited and comprehensive statistics on the content of your entire email system.**

## Technical Features

Free Trials available at [www.sherpasoftware.com](http://www.sherpasoftware.com)

### Corporate Email Policy Enforcement

- Create rules to enforce policies within PST files, mailboxes and public folders
- Administer PST files located on users' local hard drives
- Manage mailboxes and PST files on a group, user or individual basis
- Manage legal, HR and corporate retention needs
- Query Active Directory for mailbox resources
- Functionality is transparent to end-users with no disruption of email service

### Content Administration

- Powerful searching of message subject, body and attachments
- Customizable search criteria includes keywords, age, size, name, date, type, status, and wildcards
- Manage search results efficiently based upon action policies such as delete, move, export, copy, forward, replace, and change status
- Immediately locate and eliminate all known virus infected attachments
- Search recovered items folders (Dumpsters)

### Exchange Storage Management

- Seamlessly examine the growth rate of desktops, servers and the enterprise
- Archive (export) ability moves storage to other file systems and/or WORM/DVD devices
- Size and age policy enforcement eliminates files overusing space
- Zip large attachments
- Copy or archive individual public folder branches for easy recovery

### Email Data & Usage Management

- Collect specific usage data to make informed decisions
- Report on age, size, and content of messages (such as: attachments, users, folders or servers)
- Measure space utilization and reclamation statistics
- Share, email or post reports automatically
- Alert administrators and users to utilization limits and problems
- Warn users of flagged items of concern

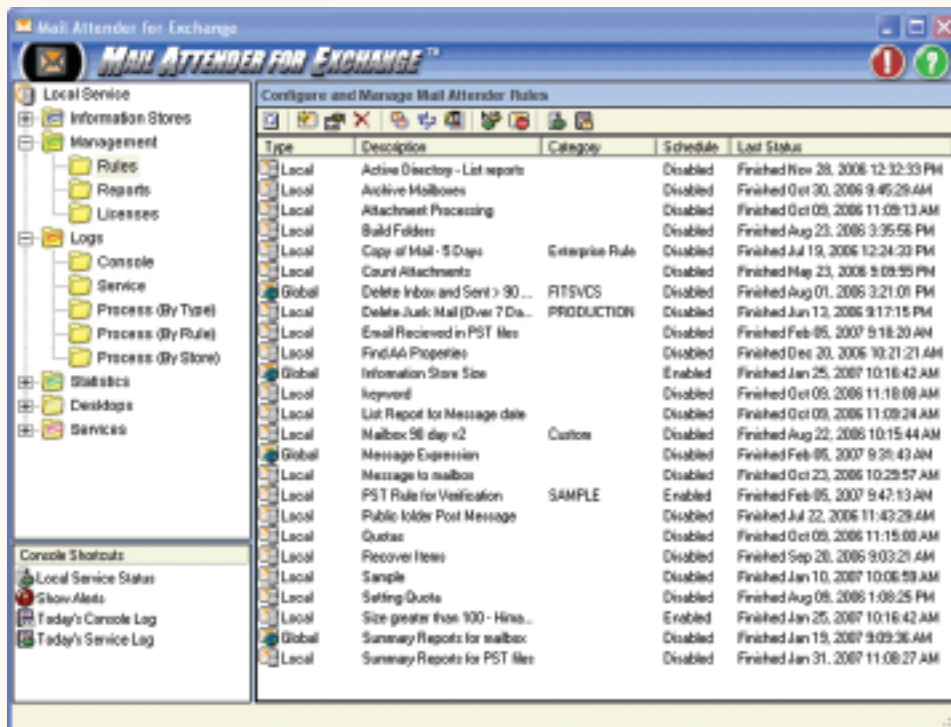
## Specifications

### System Requirements

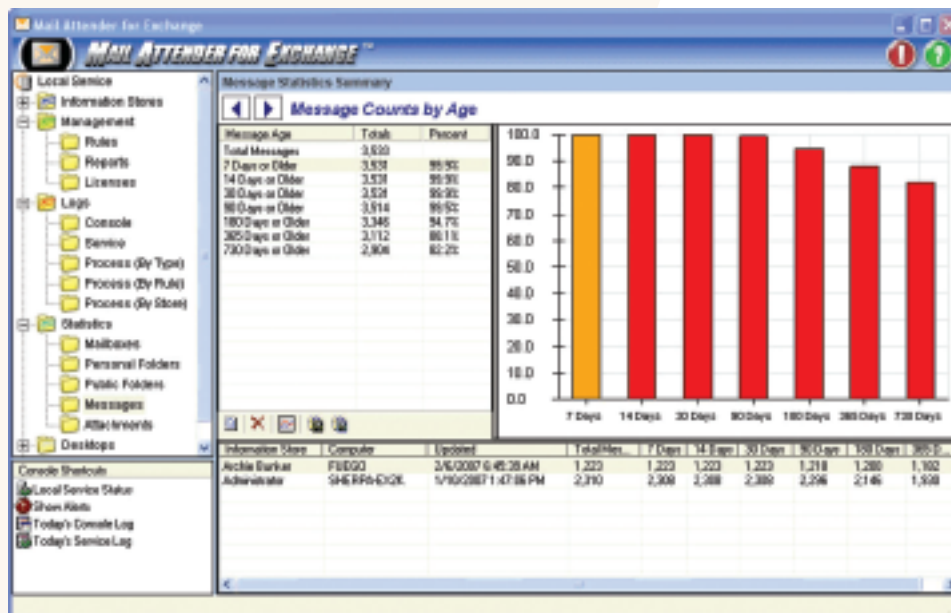
- Windows 2000, XP, 2003 and Vista
- Microsoft's Dot Net Framework 2.0 (installed automatically as needed)
- MDAC 2.7
- Internet Explorer 5.0 or higher
- Outlook 98, 2000, XP, 2003, 2007 or Exchange Server
- Approx. 50MB footprint on installation
- Allocate additional space for the growth of the database
- MSMQ (if synchronizing with other installations)

### Architecture

- Works with Exchange 5.5, 2000, 2003 and 2007
- Installation not required on the location of the information store (except in the case of desktops)
- Works with Outlook 98 or higher
- Smooth, efficient communication between the master service and the client processing engines
- Data maintained in an ODBC compliant database



Administrators have complete control over their organization's information stores by managing their email through the numerous Mail Attender rules that can be configured on their system.



One of the many Mail Attender statistical displays of your information stores, showing the amount of messages at a certain age, so you can make informed decisions about your environment.