

DOUBLE-TAKE® SERVER RECOVERY OPTION: WHOLE SERVER PROTECTION FROM A SINGLE SOLUTION

BUSINESS VALUE WHITEPAPER

Double-Take Software, Inc.

Published: October 2006

Abstract

Have you recently recovered a production server using traditional backup solutions like tape? The complexity of traditional recovery solutions compounds an already difficult situation, and heightens the opportunity for human error. Speed and quality of recovery are extremely important when customers and employees are relying on access to critical data, but the average restoration takes hours at best. And with solutions like tape backup, even a successful recovery results in the loss of any data that is new or has changed since the backup was made. The Double-Take® Server Recovery Option is a whole-server data protection solution that, when combined with Double-Take real-time replication, simplifies the restoration process and reduces the time and effort involved with server recovery. Using Double-Take with the Server Recovery Option, the entire production server – its operating system, applications and data – can be protected and easily recovered to a new system quickly.

Introduction

Have you recently recovered a production server using traditional backup solutions like tape? The complexity of traditional recovery solutions compounds an already difficult situation, and heightens the opportunity for human error. Speed and quality of recovery are extremely important when customers and employees are relying on access to critical data, but the average restoration takes hours at best. And, with solutions like tape backup, even a successful recovery results in the loss of any data that is new or has changed since the backup was made. The Double-Take Server Recovery Option is a whole-server data protection solution that, when combined with Double-Take real-time replication simplifies the restoration process and reduces the time and effort involved with server recovery. Using Double-Take with the Server Recovery Option, the entire production server – its operating system, applications and data – can be protected and easily recovered to a new system quickly.

Tape Backup in a Branch Office Scenario

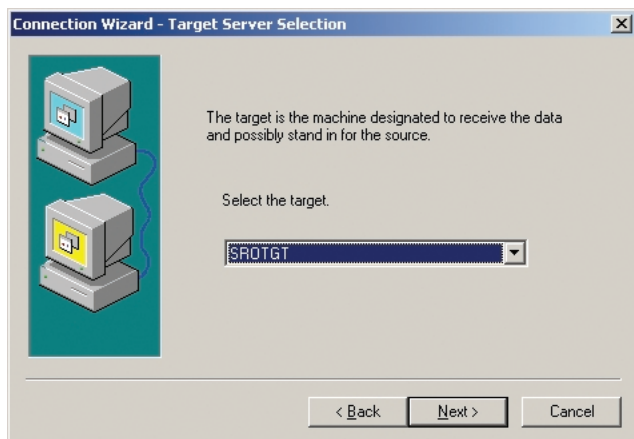
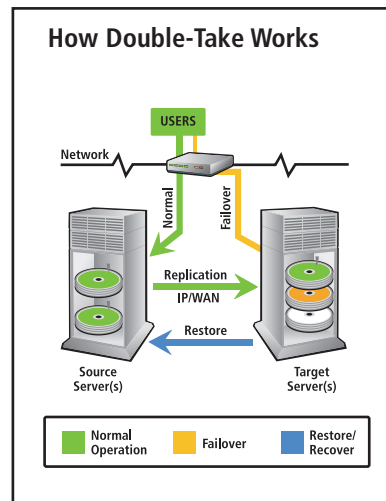
A common backup solution in a branch-office scenario is to replicate the branch servers to a central location and perform a nightly tape or disk backup. If the Branch 2 server fails, the administrator would have to provision the new server, install applications, then go through the cumbersome recovery process. On average, this would take more than one IT person and several hours. Still, when the recovery server is restored, Branch 2 is missing all of the data that is new or had changed since the night before.

Double-Take Server Recovery Option

Double-Take, when combined with the Double-Take Server Recovery Option (SRO), provides a single solution to continuously protect and recover an entire server. Protection is provided by the industry-proven real-time replication of Double-Take while recovery is performed by the Server Recovery Option. The Recovery Manager, provided as part of the Double-Take Server Recovery Option, presents the task of server recovery as a series of easy-to-understand steps. Because Double-Take replication protects the entire production server — its operating system, applications and data, restoring the server encompasses as few steps as possible and provides a significantly better recovery time than existing solutions such as tape backup. Built on patented Double-Take technology

Built on patented Double-Take technology

The Double-Take Server Recovery Option is used in conjunction with Double-Take and its replication technology, the world's most relied-upon solution for accessible and affordable data protection solutions for disaster recovery and centralized backup. Double-Take utilizes patented replication and failover technology that continuously captures byte-level changes as they happen and replicates those changes to one or more secondary servers at any location - locally or at a recovery site miles away.



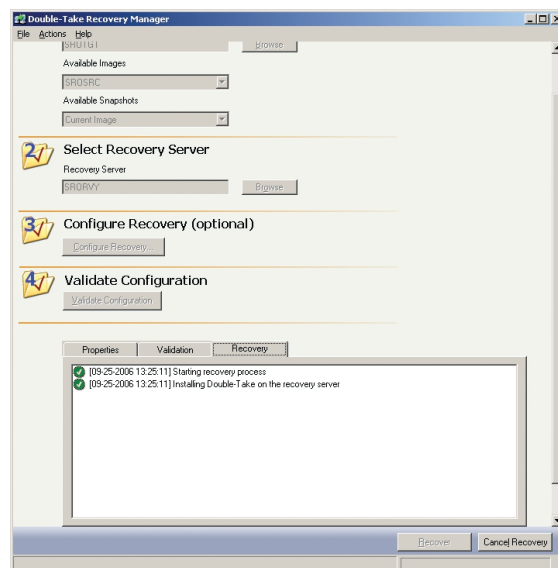
Easy implementation and management

The Double-Take SRO features additions to the Double-Take Management Console that provide an easy-to-follow wizard for creating a connection that protects the entire server. Once installed, Double-Take performs an initial mirror of the server, including data, applications and operating system. When the mirror is complete, Double-Take begins replicating changes made, at the byte level, to the operating system, data and applications. This replication of system state ensures that the entire server can be recovered in the event of a disaster or data loss.

In some cases, not every volume on a server needs protected. The Double-Take Server Recovery Option provides the option to exclude one or more data volumes at either protection or recovery time based on an organization's specific requirements.

Fast and easy recovery with Recovery Manager

The Recovery Manager application, included with the Double-Take Server Recovery Option, allows you to quickly and easily configure and perform recovery, including validation steps that ensure recovery goes as planned. When a system volume or entire server fails, recovery of both system state and data can be performed from the Recovery Manager, reducing the number of steps needed to recover a server to its original state. The Recovery Manager also eliminates many of the steps required by traditional backup and restore solutions by requiring only a standard Windows OS on the new system.



Broad Application Support

The Double-Take Server Recovery Option protects the entire server so there is no need for specialized application support as is the case with tape backup solutions. The Double-Take Server Recovery Option supports most business-critical applications and replicates between any configuration of physical and virtual systems. The Double-Take SRO also integrates with Microsoft® Volume Shadow Copy Service to allow you to schedule and recover from up to 512 point-in-time copies of protected data. And, with the exception of a matching operating system, the recovery server does not have to be an exact match for the server you are recovering.

Double-Take Server Recovery Option in a Branch Office Scenario

Let's look at the initial example scenario that was provided, instead utilizing the real-time, whole-server protection and streamlined recovery of Double-Take and the Double-Server Recovery Option. When the branch server being protected fails, the administrator in the central office uses the Recovery Manager to choose the appropriate recovery server. This recovery server resides on the network at the branch office, but only requires a baseline Windows operating system to be installed - no additional provisioning of software is required. The Recovery Manager validates the compatibility of the recovery server, then quickly restores applications and data that have been protected, in real-time, by Double-Take. Once the restoration process has finished, business can resume at the branch office with minimal downtime and lost data.

Summary

Recovering your production server from backup using traditional recovery solutions can be a cumbersome and stressful process. Complex restoration software and the inability of solutions like tape backup to protect data in real-time don't improve the situation. Double-Take and the Double-Take Server Recovery Option provide a better alternative - real-time data protection with a streamlined recovery process that reduces the time and effort involved with server recovery. Double-Take replication in conjunction with the Double-Take Server Recovery Option protect the entire production server, including system state data, so there's no need to provision a new server or reinstall applications.

About Double-Take® Software

Double-Take® Software provides the world's most relied upon solution for accessible and affordable data protection for Microsoft® Windows® applications. The Double-Take product is the standard in data replication, enabling customers to protect business-critical data that resides throughout their enterprise. With its partner programs and professional services, Double-Take delivers unparalleled data protection, centralized back-up, high availability, and recoverability. It's the solution of choice for thousands of customers, from SMEs to the Fortune 500 in the banking, finance, legal services, retail, manufacturing, government, education and healthcare markets. Double-Take is an integral part of their disaster recovery, business continuity and overall storage strategies. For more information, please visit www.doubletake.com.

Double-Take Software Headquarters

257 Turnpike Road
Southborough, MA 01772
Phone: +1-800-964-0185 or +1-508-229-8483
Fax: +1-508-229-0866

Double-Take Software Sales

8470 Allison Pointe Blvd. Suite 300
Indianapolis, IN 46250
Phone: +1-888-674-9495 or +1-317-598-0185
Fax: +1-317-598-0187

Or visit us on the web at www.doubletake.com



Get the standard today: www.doubletake.com or 888-674-9495

© 2006 Double-Take Software, Inc. All rights reserved.

Double-Take, GeoCluster, and NSI are registered trademarks of Double-Take Software, Inc. Balance, Double-Take for Virtual Systems, and Double-Take for Virtual Servers are trademarks of Double-Take Software, Inc. Microsoft, Windows, and the Windows logo are trademarks or registered trademarks of Microsoft Corporation in the United States and/or other countries. All other trademarks are the property of their respective companies.