

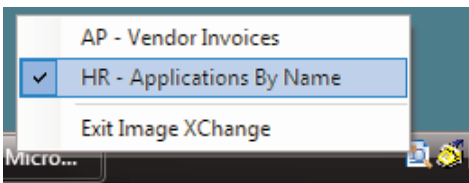
# The answer for content enabling your core business applications



## Smart Search **CONTENT ENABLE YOUR BUSINESS APPLICATIONS WITH IMAGE XCHANGE**

### SmartSearch Image XChange

As the central repository for all your business content, SmartSearch serves as the hub for business automation. Leveraging the power of Image XChange, business users can quickly access critical content to make informed decisions regardless of the application they are running.



SmartSearch Image XChange now makes that stored content available to users from virtually any business application without the complexity or expense of standard integration.

### What is SmartSearch Image XChange?

Image XChange enables SmartSearch users to seamlessly integrate their SmartSearch Archives with most any line of business system. Using GDI hooking technology, users can search the SmartSearch Archives using one or more values right from any window they are viewing. Any text based value contained within the header, body or caption of the application can be used to run a search against the SmartSearch Archives, effectively image enabling your line of business application without the complexity or expense of standard integration

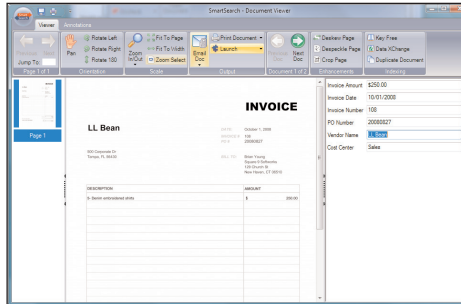
#### PLATFORMS:

Windows  
Web  
Terminal Emulators  
RUMBA, Client Access, UNIX VT100  
Reflections, All 3270 and 5250 emulators  
JAVA, DOS

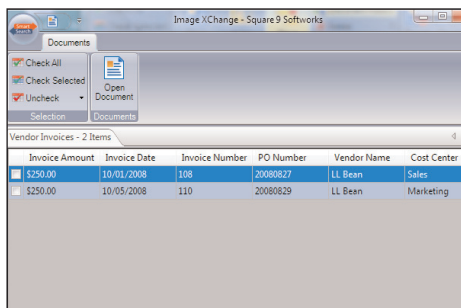
### How does it work?

To leverage the power of Image XChange:

- Simply click Image XChange system tray icon and selects a desired search from the list which has been pre-defined within SmartSearch.
- Place the cursor over any text value, select the CTRL + right click, and the document search results set are displayed. (Optionally the content can be automatically loaded into the document viewer.)
- To run the same search again, simply point to another value and select CTRL + right click. Your default search stays active throughout the day, ready to find the content you are searching for.
- To run a different search simply click the system tray and select a new default search.



**No Programming Required** – Image XChange achieves integration without the need for time-consuming programming, scripting or any modification to your line of business application. This allow organizations to integrate multiple applications at a fraction of the cost traditional for integration



**Full SmartSearch Functionality** – Documents accessed through Image XChange have the full functionality of the SmartSearch client including the ability to launch, print, email, enhance, annotate, redact, and edit documents.

### TARGET MARKET

#### FINANCIAL:

Oracle Financials  
MS Great Plains/Dynamics  
QuickBooks  
PeachTree  
ACT  
Goldmine

#### CRM

MS CRM  
Globus  
Series 4  
Sales Logix  
Commerce One  
Salesforce

#### LEGAL

Aspen Case Management  
ProLaw Amicus Attorney

#### HEALTHCARE:

MedSeries 4  
Misisy CPR  
Medipack  
Cerner  
Meditek  
Ecypsis

#### GOVERNMENT:

Tidemark  
Sungard H.T.E  
Munis

#### EDUCATION:

Sungard Banner  
Datatel Colleague  
SASI  
PowerSchool  
Pearson Chancellery  
CIMS

#### ERP:

Microsoft Axapta  
P Peoplesoft  
JD Edwards  
Lawson  
Siebel  
SAP R/3

\*\*Image XChange works on virtually any platform or application. Contact Square 9 Softworks today to learn whether your application is compliant



Square9  
Softworks

129 Church Street ■ New Haven, Connecticut 06510